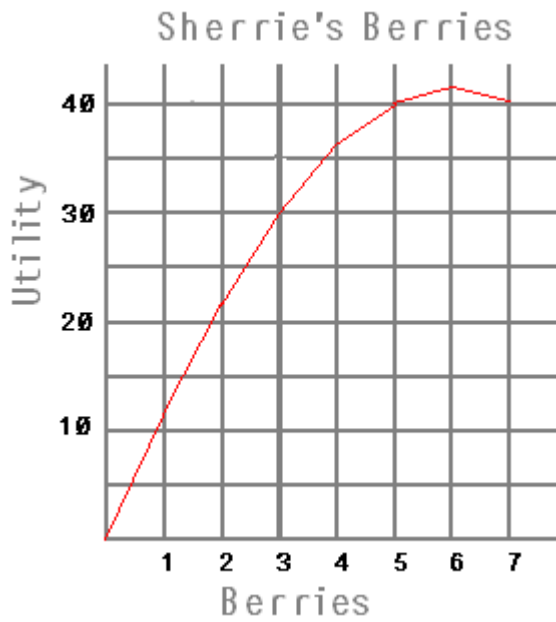


Solutions;

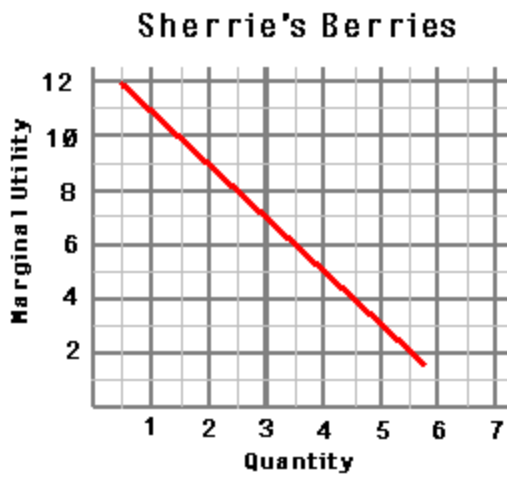
Sample I

1.



2.  $U(x) = 10\sqrt{x}$   
 $U(x) = 10\sqrt{64}$   
 $U(x) = 80$

Sample II.



2. The answers students' graph should approximate the answers in the table below:

Q	MU
1	10
2	4.14
3	3.179
4	2.679
5	2.134
6	1.963