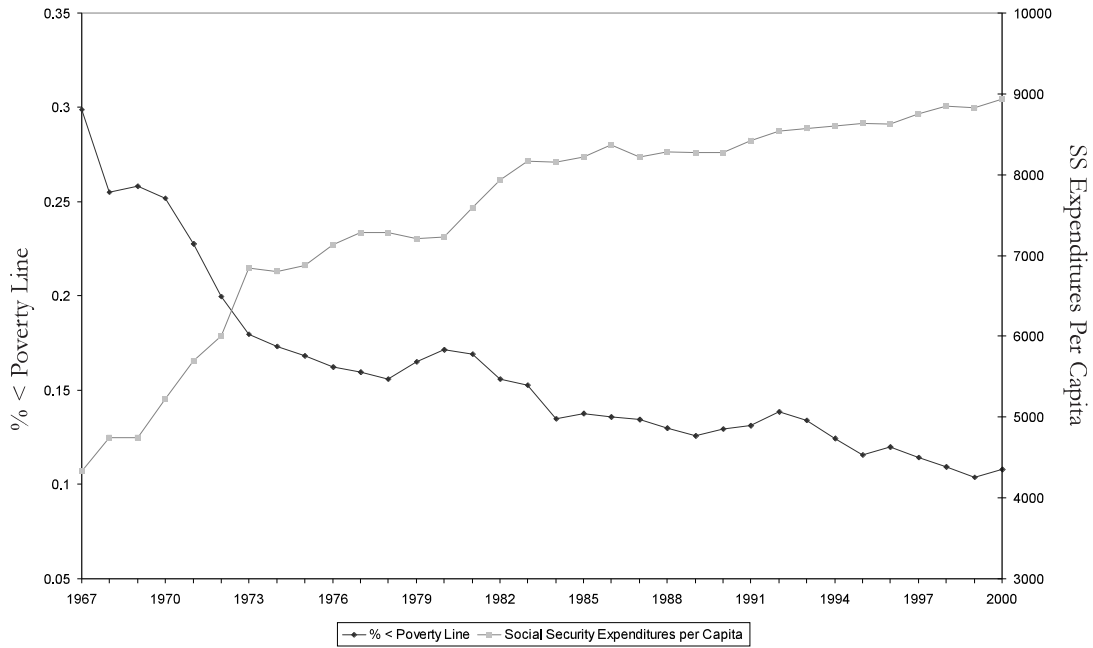


**Resource 1**

**“Elderly Poverty and Social Security Expenditures Over Time”**

Figure 1: Elderly Poverty and Social Security Expenditures Over Time



**Source:** National Bureau of Economic Research, (2004). Elderly poverty and Social Security expenditures over time [Chart]. Retrieved from <http://www.nber.org/aginghealth/summer04/summer04.pdf>