

The November Unemployment Rate A Case Study December 8, 2006

Stephen Buckles
Vanderbilt University

Table 1: Calculation of the Unemployment Rate

	Description	
Total civilian population	229,915,000	(excluding those under 16, military, and persons in institutions)
- Not in Labor force	77,534,000	(retired, students, individuals choosing not to work)
= Labor force	152,381,000	(total population minus those not in labor force)
- Employed	145,564,000	(individuals with jobs)
= Unemployed	6,817,000	(individuals without a job and actively searching)

$$\text{Unemployment Rate} = \frac{6,817,000}{6,817,000 + 145,564,000} = 4.5 \%$$

Figure 1: The US Unemployment Rate since 1990

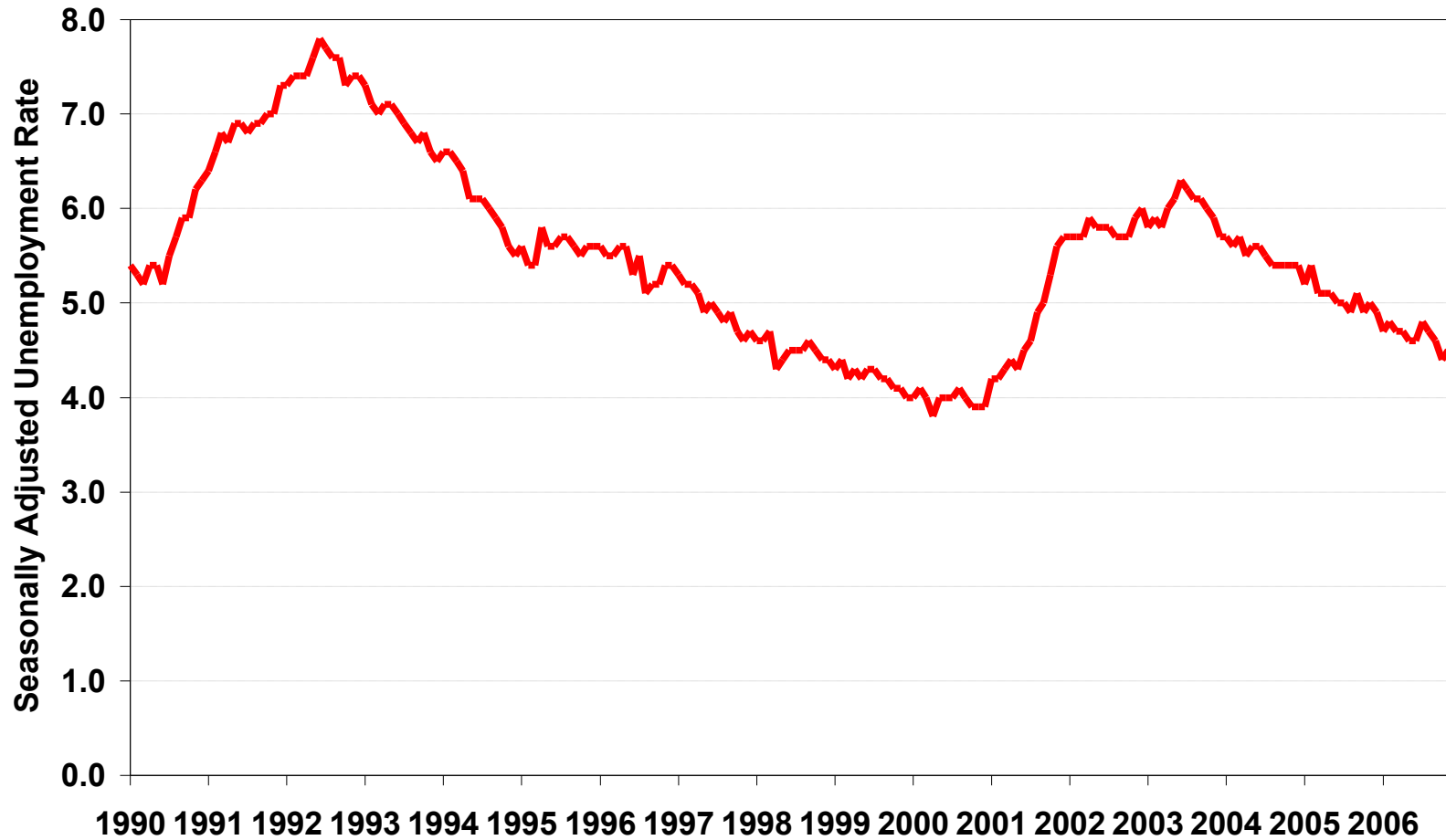


Figure 2. Recent Unemployment Rates in the US

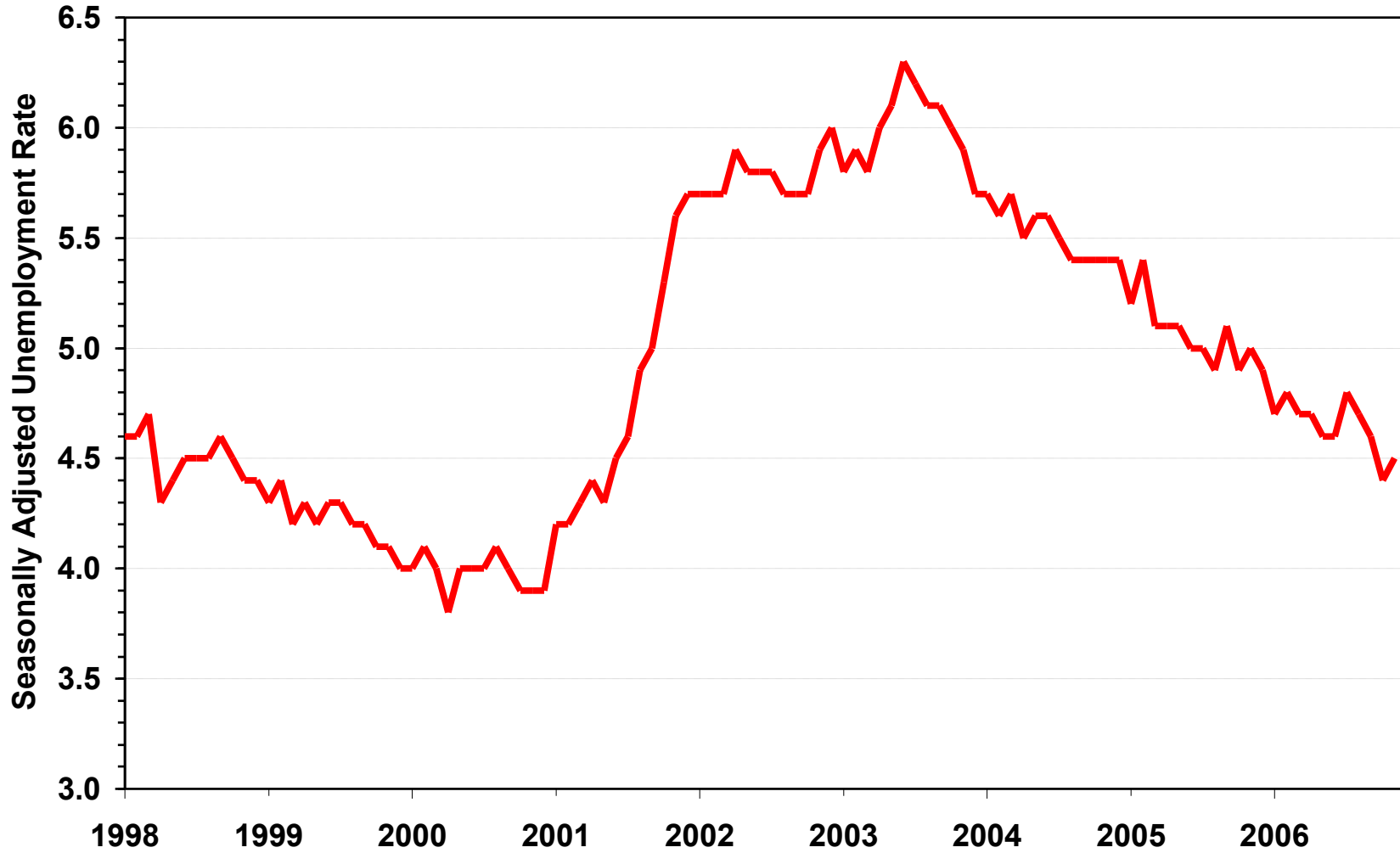
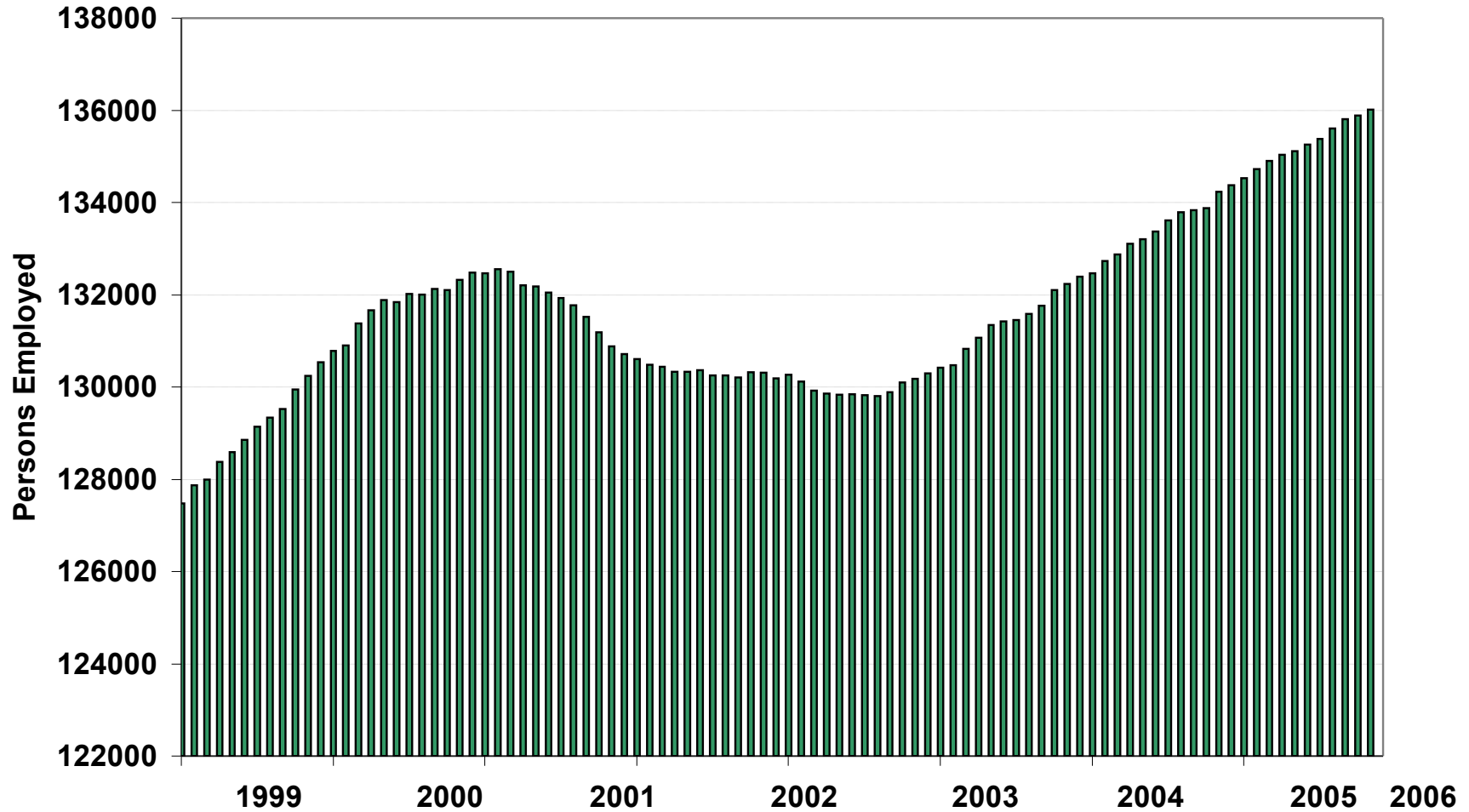


Figure 3: Seasonally Adjusted Monthly Employment



**Figure 4: Monthly Changes in Employment
 1999 to 2006**

**Change in employment
 in 1000's**

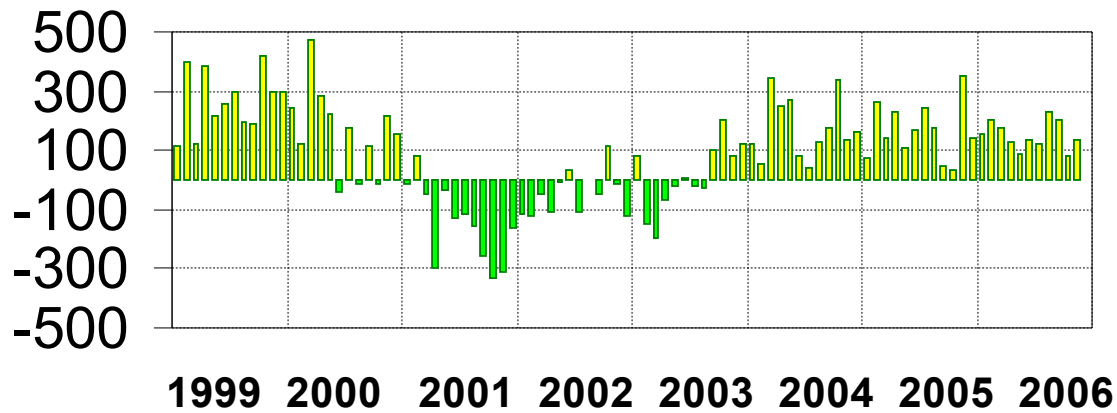


Table 2: Unemployment Statistics
by Gender, Race and Age

Adult Men	3.9%
Adult Women	4.0%
Whites	3.9%
Blacks	8.6%
Hispanics	4.9%
Teenagers	15.1%