

The June Unemployment Rate

A Case Study

July 3, 2003

Stephen Buckles

Erin Kiehna

Bharath Subramanian

Vanderbilt University

Figure 1: The US Unemployment Rate since 1990

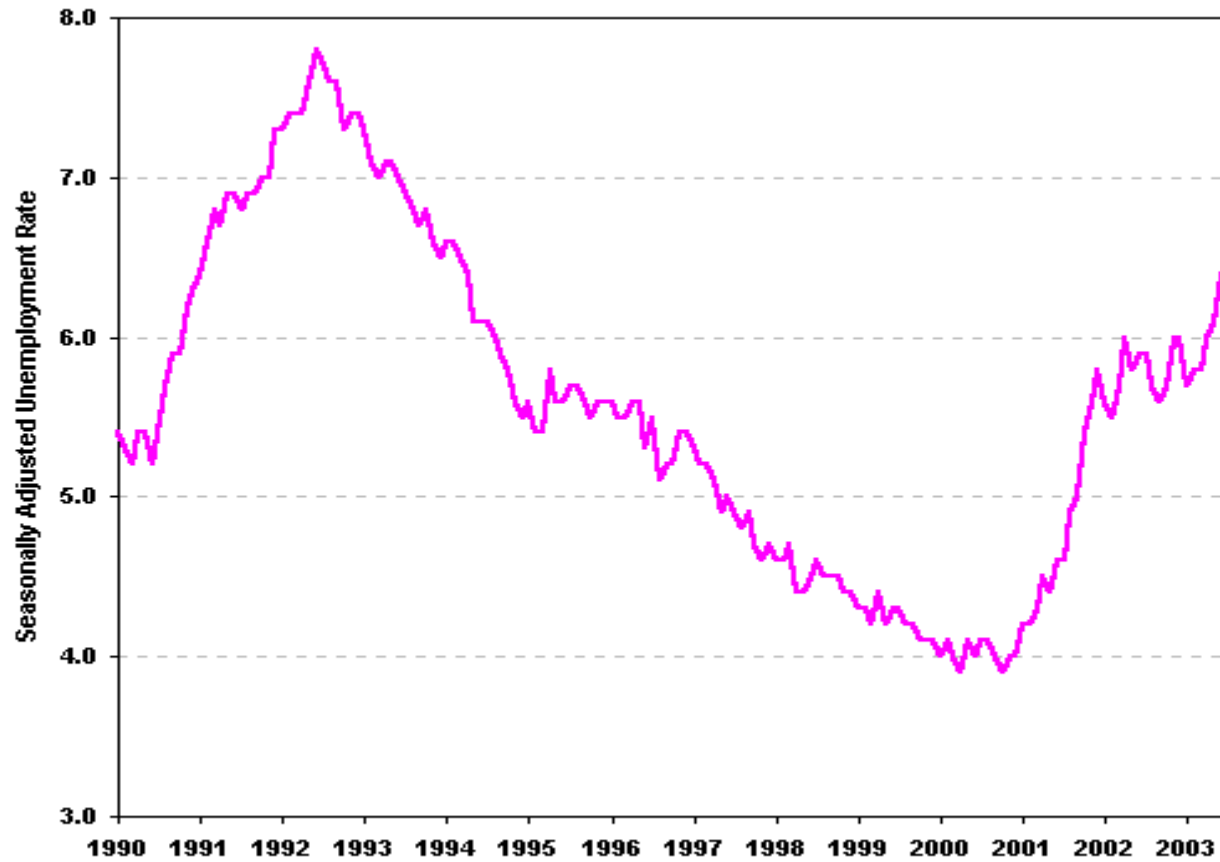


Figure 2: Recent Unemployment Rates in the US

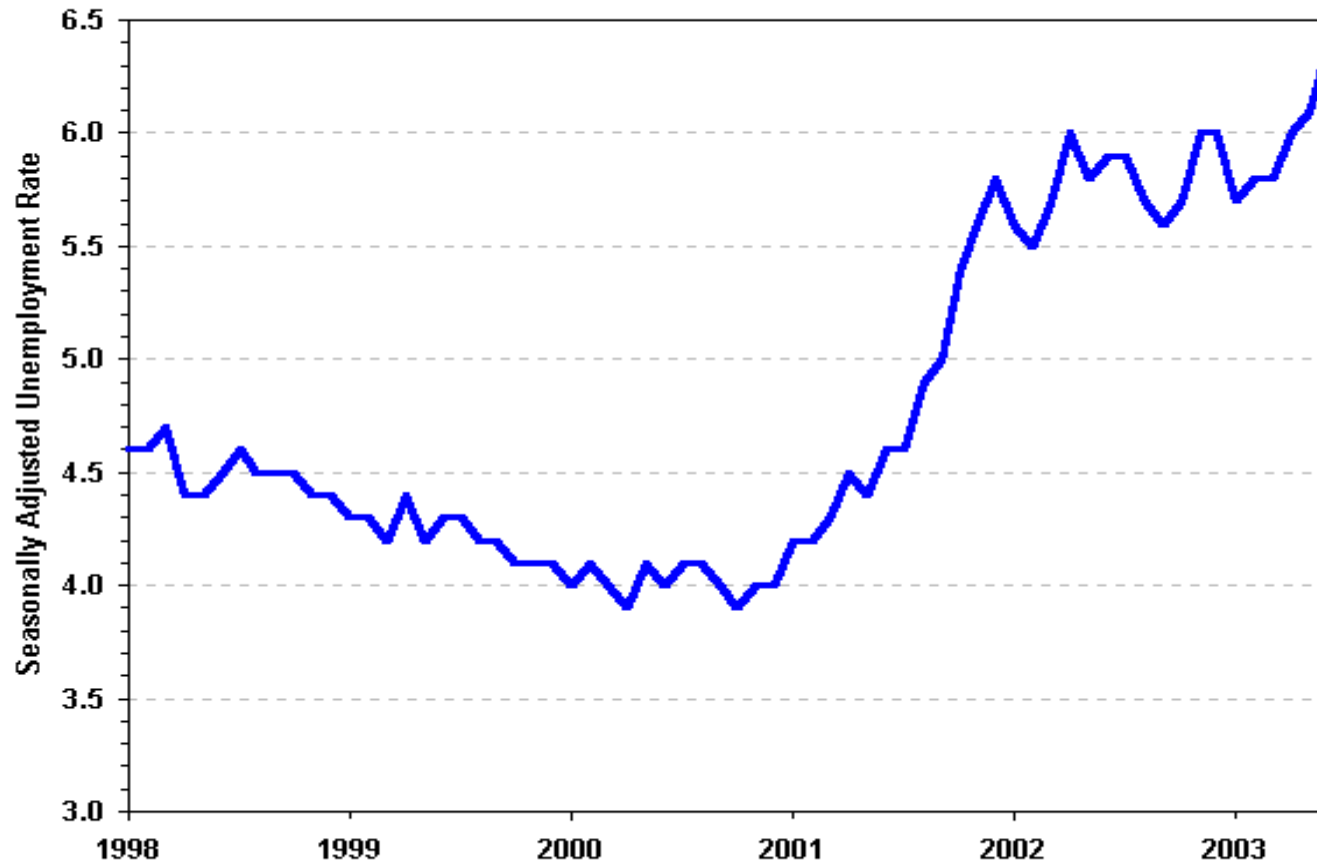


Figure 3: Seasonally Adjusted Monthly Employment

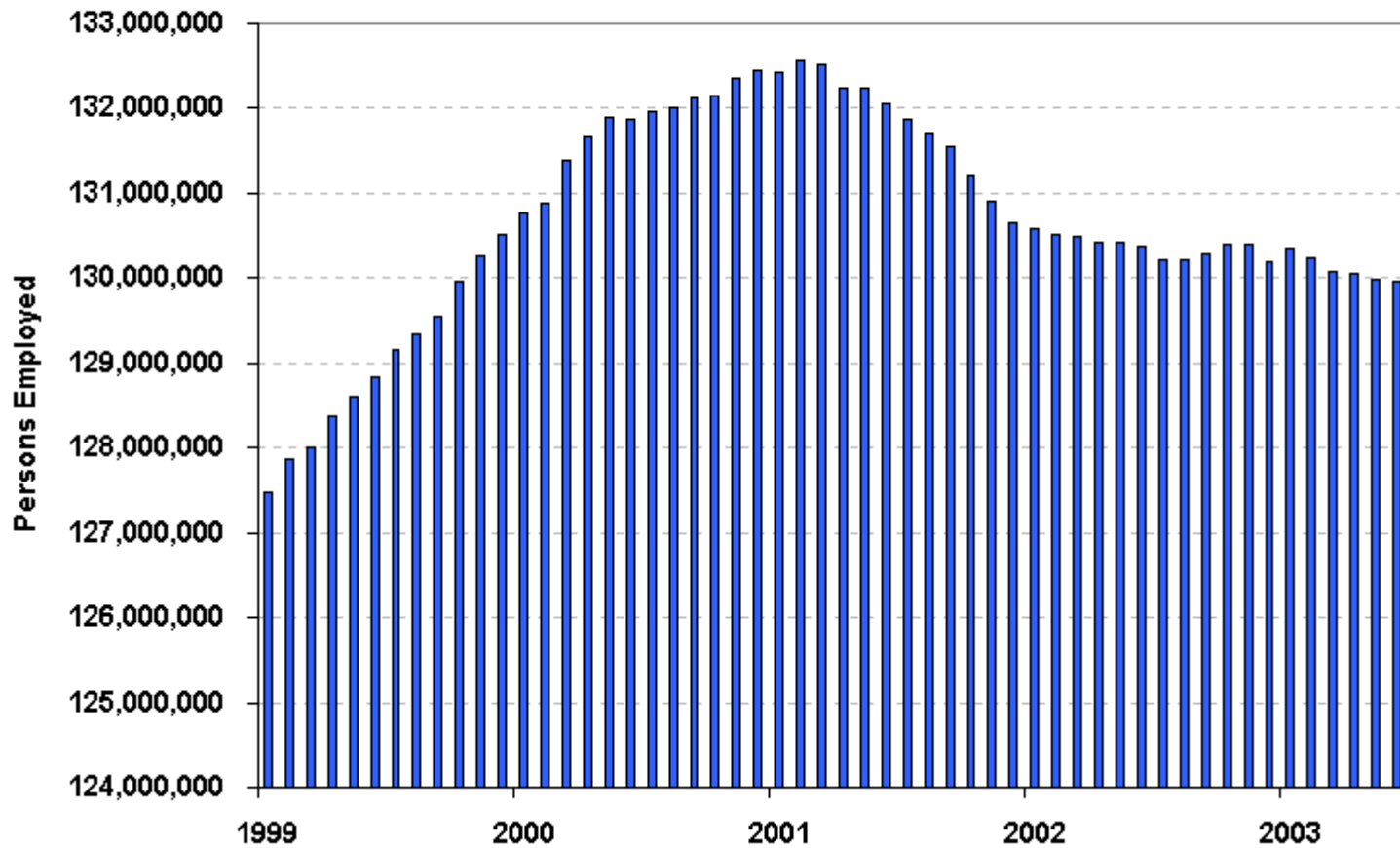


Figure 4: Changes in Seasonally Adjusted Monthly Employment

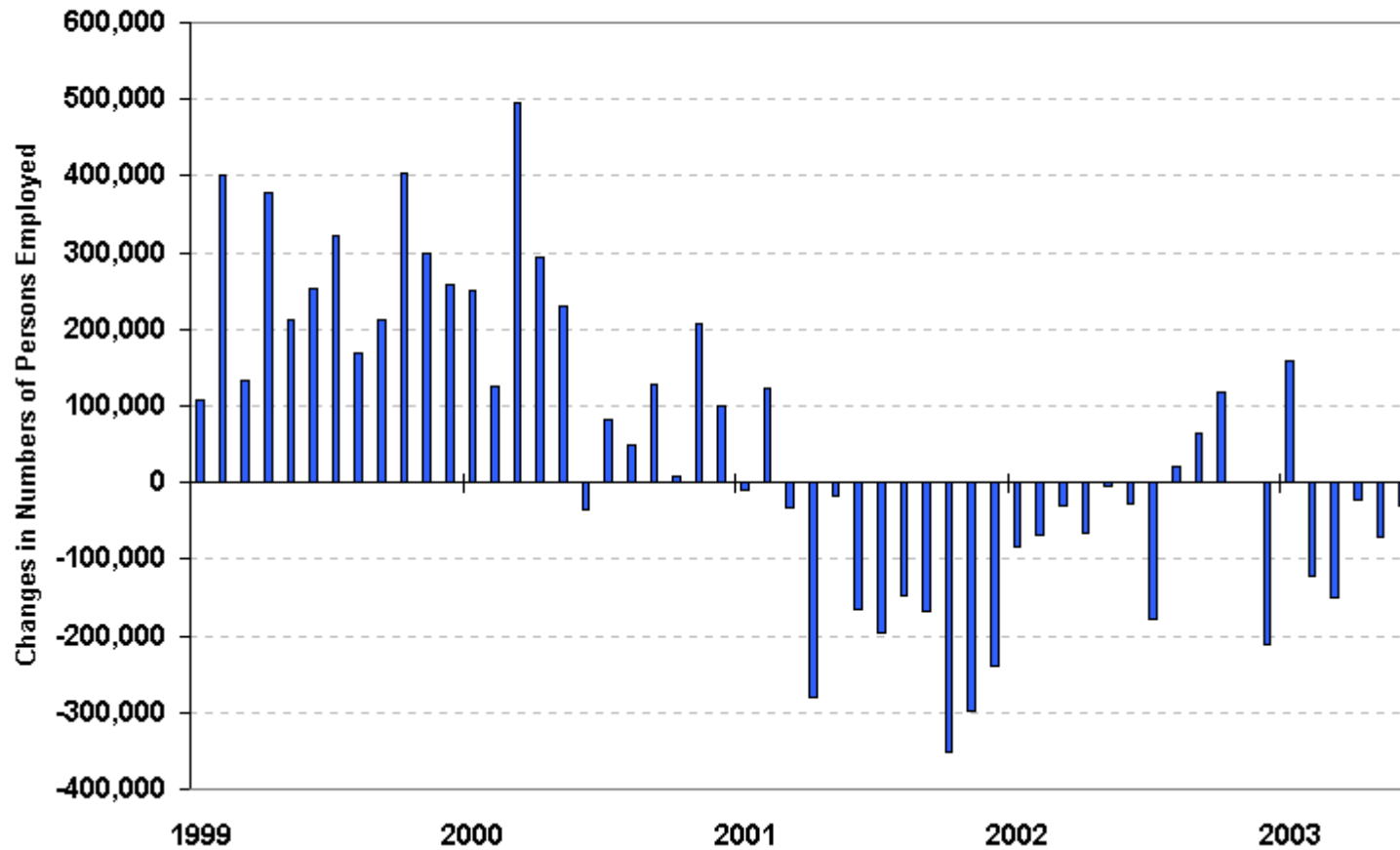


Table 1: Calculation of the Unemployment Rate

Table 1: Calculation of the Unemployment Rate		
		Description
Total civilian population	221,014,000	(excluding those under 16, military, and persons in institutions)
- Not in Labor force	73,918,000	(retired, students, individuals choosing not to work)
= Labor force	147,096,000	(total population minus those not in labor force)
- Employed	137,738,000	(individuals with jobs)
= Unemployed	9,358,000	(individuals without a job and actively searching)

$$\text{Unemployment Rate} = \frac{9,358,000}{137,738,000 + 9,358,000} = 6.4 \%$$

Table 2: Unemployment Statistics by Gender, Race and Age	
Adult Men	6.1%
Adult Women	6.1%
Whites	5.5%
Blacks	11.8%
Hispanics	8.4%
Teenagers	19.3%